

# 2019 KS2 School Dashboard

for governors & school leaders

Produce custom dashboards  
at [fftaspire.org](http://fftaspire.org)

## Beecroft Primary School

LA Leeds DFE 3832407 Produced January 2020 Version 2

### What it is

Seven easy-to-use reports that help governors and school leaders to evaluate school performance using the latest 2019 DFE school performance indicators.

### What it tells you

- What are the strengths and areas for improvement in your school?
- How does attainment and pupil progress compare to the national average over the last three years?
- How are you performing in different subjects?
- Do you have any under-performing groups of pupils?
- How might the context of your school affect performance?
- How does pupil attendance compare to the national average?

### About the data shown

1 2 3

#### Actual results

Actual results for your school, using a range of measures such as averages and thresholds.



#### Gauges

These display headline indicators and whether actual results and pupils' progress are in line with, or significantly above or below, the national average.

ESTIMATED



1 2 3

#### Pupil progress

The value added progress that your pupils have made from one key stage to the next. FFT compares your actual results to the estimated results based on the progress of similar pupils nationally.



#### Statistical significance

Green plus signs and red minus signs highlight where either actual results or pupils' progress is significantly above or below the national average.



#### Trends

The dashboard analyses school performance over 3-5 years. Any significant year-on-year improvement is highlighted using an up arrow. Significant declines in performance are highlighted with a down arrow.



#### Strengths & weaknesses

These highlight key pupil groups and subjects where progress is above or below the national average.

### Working in partnership with



### Data sources

Generated from FFT Aspire which includes data sourced from the DfE (National Pupil Database) and data calculated by FFT. FFT is accredited as a DfE supplier to receive early access to ASP data. Headline performance indicators will be consistent with the DfE School Performance Tables and ASP.

# Overview

## KS2 Attainment 2019 · Actual results

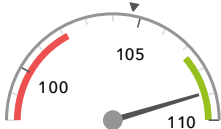
32 pupils

Average Scaled Score (Re, Ma)

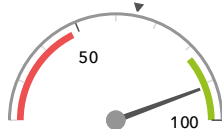
% Expected standard+ (Re, Wr, Ma)

108.9 +

91% +



Significantly above the national average (104.7) ◀



Significantly above the national average (65%) ◀

## KS2 Progress 2019 · Value Added

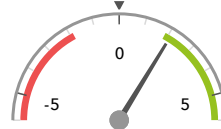
31 matched pupils

Average Scaled Score (Re, Ma)

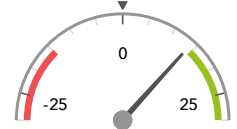
% Expected standard+ (Re, Wr, Ma)

+2.1 +

+14%



Significantly above the national average (0) ◀



In line with the national average (0%) ◀

## KS2 higher and lower performing pupil groups 2019

Minimum group size: 5

	Higher performing	Lower performing
<b>Overall achievement</b> pupil progress	SEN Support (7) Autumn Term (6) Not FSM (ever) (23) <span style="color: green;">+</span>	
<b>KS2 reading achievement</b> pupil progress	Autumn Term (6) Female (14) First language English (16)	
<b>KS2 writing achievement</b> pupil progress	Pakistani (8) Middle attainers (14) Summer Term (12)	FSM (in last 6 years) (7)
<b>KS2 mathematics achievement</b> pupil progress	Male (17) <span style="color: green;">+</span> First language not English (15) <span style="color: green;">+</span> Not FSM (ever) (23) <span style="color: green;">+</span>	FSM (ever) (8) FSM (in last 6 years) (7)
<b>KS2 grammar, punctuation &amp; spelling achievement</b> pupil progress	SEN Support (7) <span style="color: green;">+</span> Pakistani (8) <span style="color: green;">+</span> Middle attainers (14) <span style="color: green;">+</span>	

KS2's latest academic year uses the Spring 2019 DfE census. Earlier years use that year's Spring census – [learn more](#) · [See recent Aspire updates](#)

## Attainment & progress

### KS2 Attainment 2019

32 pupils

Average Scaled Score (Re, Ma)

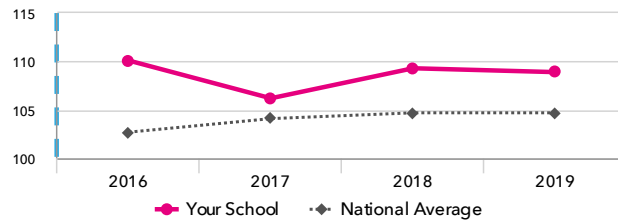
# 108.9<sup>+</sup>

FFT Rank



Significantly above the national average (104.7)

Attainment Over Time



### KS2 Progress 2019

31 matched pupils

Average Scaled Score (Re, Ma)

# +2.1<sup>+</sup>

FFT Rank



Significantly above the national average (0)

% Expected standard+ (Re, Wr, Ma)

# +14%

FFT Rank



In line with the national average (0%)

% Expected standard+ (Re, Wr, Ma)

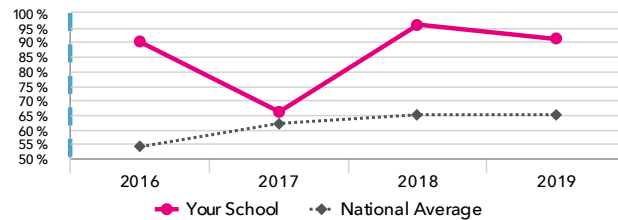
# 91%<sup>+</sup>

FFT Rank



Significantly above the national average (65%)

Attainment Over Time



### KS2 performance summary

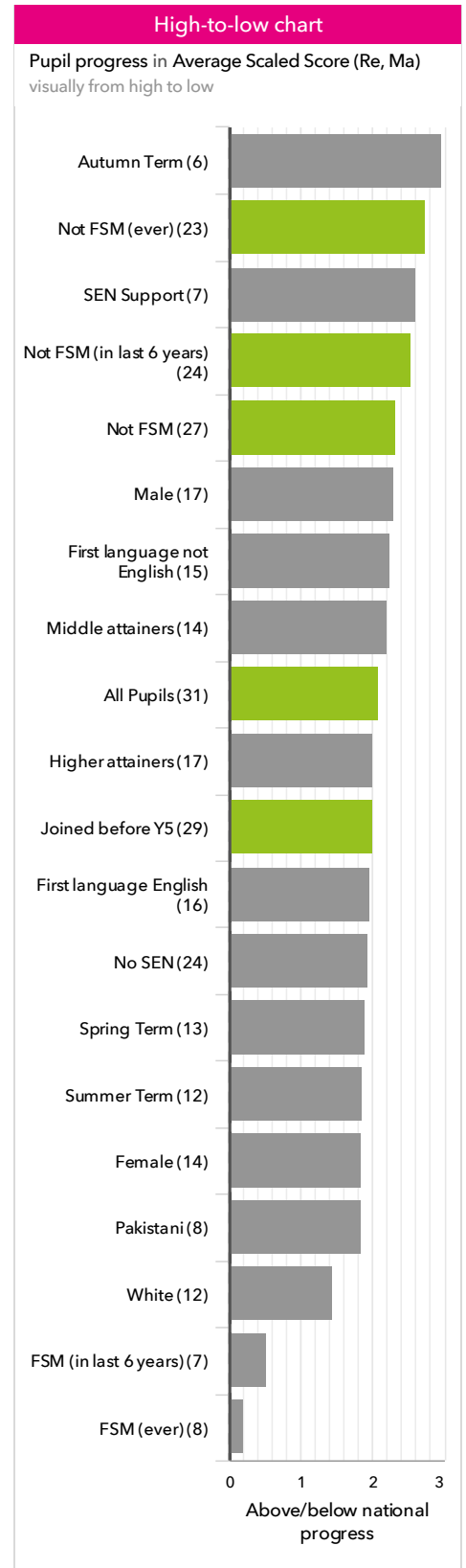
	Actual results			Pupil progress		
	2017	2018	2019	2017	2018	2019
Number of Pupils / % Matched	29	28	32	93%	96%	97%
% Expected standard+ (Re, Wr, Ma)	66%	96% <sup>+</sup>	91% <sup>+</sup>	-5%	+21% <sup>+</sup>	+14%
% Higher standard (Re, Wr, Ma)	24% <sup>+</sup>	36% <sup>+</sup>	25% <sup>+</sup>	+9%	+23% <sup>+</sup>	+8%
Average Scaled Score (Re, GPS, Ma)	107.5 <sup>+</sup>	110.5 <sup>+</sup> ↑	110.2 <sup>+</sup>	+1.4 <sup>↓</sup>	+4.1 <sup>+</sup> ↑	+2.9 <sup>+</sup>
Average Scaled Score (Re, Ma)	106.2 <sup>↓</sup>	109.3 <sup>+</sup> ↑	108.9 <sup>+</sup>	+0.5 <sup>↓</sup>	+3.2 <sup>+</sup> ↑	+2.1 <sup>+</sup>
% Expected standard+ Reading	69%	96% <sup>+</sup>	94% <sup>+</sup>	-13%	+12%	+8%
% Higher standard Reading	28%	43%	38%	-6%	+8%	+2%
Scaled Score Reading	104.4 <sup>↓</sup>	108.9 <sup>+</sup> ↑	108.5 <sup>+</sup>	-1.4 <sup>↓</sup>	+2.4 <sup>+</sup> ↑	+1.7
% Expected standard+ Writing	97% <sup>+</sup>	100% <sup>+</sup>	100% <sup>+</sup>	+12%	+13%	+9%
% Higher standard Writing	48% <sup>+</sup>	54% <sup>+</sup>	41% <sup>+</sup>	+25% <sup>+</sup>	+28% <sup>+</sup>	+13%
Scaled Score Writing	107.4 <sup>+</sup>	108.4 <sup>+</sup>	107.1 <sup>+</sup>	+4.1 <sup>+</sup>	+4.6 <sup>+</sup>	+2.3 <sup>+</sup> ↓
% Expected standard+ Maths	93% <sup>+</sup>	100% <sup>+</sup>	94% <sup>+</sup>	+13%	+17% <sup>+</sup>	+6%
% Higher standard Maths	34%	54% <sup>+</sup>	53% <sup>+</sup>	+0% <sup>↓</sup>	+24% <sup>+</sup>	+16%
Scaled Score Maths	107.9 <sup>+</sup>	109.8 <sup>+</sup>	109.3 <sup>+</sup>	+2.4 <sup>+</sup>	+4.0 <sup>+</sup>	+2.5 <sup>+</sup>
% Expected standard+ Grammar, Punctuation & Spelling	93%	100% <sup>+</sup>	100% <sup>+</sup>	+8%	+13%	+9%
% Higher standard Grammar, Punctuation & Spelling	52% <sup>+</sup>	79% <sup>+</sup> ↑	75% <sup>+</sup>	+13%	+33% <sup>+</sup>	+27% <sup>+</sup>
Scaled Score Grammar, Punctuation & Spelling	109.5 <sup>+</sup>	113.7 <sup>+</sup> ↑	113.7 <sup>+</sup>	+2.0	+5.7 <sup>+</sup> ↑	+4.8 <sup>+</sup>
% Expected standard+ Science	97%	96%	100% <sup>+</sup>	-	-	-

KS2's latest academic year uses the Spring 2019 DfE census. Earlier years use that year's Spring census – [learn more](#) · [See recent Aspire updates](#)

# Pupil groups

## KS2 Pupil groups performance 2019

			Actual results			Pupil progress		
	Pupils		Average Scaled Score (Re, Ma)	% Expected standard+ (Re, Wr, Ma)	% Higher standard (Re, Wr, Ma)	Average Scaled Score (Re, Ma)	% Expected standard+ (Re, Wr, Ma)	% Higher standard (Re, Wr, Ma)
<b>Summary</b>	All Pupils	32	108.9 <span style="color: green;">+</span>	91% <span style="color: green;">+</span>	25% <span style="color: green;">+</span>	+2.1 <span style="color: green;">+</span>	+14%	+8%
<b>Gender</b>	Male	18	107.8	83%	22%	+2.3	+15%	+13%
	Female	14	110.3 <span style="color: green;">+</span>	100% <span style="color: green;">+</span>	29%	+1.9	+13%	+3%
<b>DFE Prior Attainment</b>	Higher attainers	17	112.2	100%	47%	+2.0	+5%	+16%
	Middle attainers	14	105.3	86%	0%	+2.2	+26%	-2%
<b>Pupil Premium</b>	FSM (in last 6 years)	8	107.8	75%	13%	+0.5	+3%	-10%
	Not FSM (in last 6 years)	24	109.3 <span style="color: green;">+</span>	96% <span style="color: green;">+</span>	29% <span style="color: green;">+</span>	+2.6 <span style="color: green;">+</span>	+17% <span style="color: green;">+</span>	+14%
<b>FSM</b>	FSM	4	108.3	75%	25%	+0.5	-6%	-0%
	Not FSM	28	109.0 <span style="color: green;">+</span>	93% <span style="color: green;">+</span>	25% <span style="color: green;">+</span>	+2.3 <span style="color: green;">+</span>	+17% <span style="color: green;">+</span>	+9%
<b>FSM Ever</b>	FSM (ever)	9	107.7	78%	11%	+0.2	+4%	-11%
	Not FSM (ever)	23	109.4 <span style="color: green;">+</span>	96% <span style="color: green;">+</span>	30% <span style="color: green;">+</span>	+2.8 <span style="color: green;">+</span>	+18%	+15%
<b>Term of Birth</b>	Autumn Term	6	112.8 <span style="color: green;">+</span>	100%	50% <span style="color: green;">+</span>	+3.0	+7%	+21%
	Spring Term	13	107.4	100% <span style="color: green;">+</span>	0%	+1.9	+29% <span style="color: green;">+</span>	-12%
	Summer Term	13	108.5 <span style="color: green;">+</span>	77%	38% <span style="color: green;">+</span>	+1.9	+2%	+23%
<b>SEN Group</b>	SEN Support	8	103.9	75% <span style="color: green;">+</span>	0%	+2.6	+36%	-1%
	No SEN	24	110.5 <span style="color: green;">+</span>	96% <span style="color: green;">+</span>	33% <span style="color: green;">+</span>	+1.9	+8%	+11%
<b>EAL</b>	First language not English	16	107.8	88%	13%	+2.2	+18%	+5%
	First language English	16	110.0 <span style="color: green;">+</span>	94% <span style="color: green;">+</span>	38% <span style="color: green;">+</span>	+2.0	+11%	+11%
<b>Mobility</b>	Joined in Y5 or Y6	2	114.0	100%	50%	+3.4	+3%	+22%
	Joined before Y5	30	108.6 <span style="color: green;">+</span>	90% <span style="color: green;">+</span>	23% <span style="color: green;">+</span>	+2.0 <span style="color: green;">+</span>	+15%	+7%
<b>Ethnicity</b>	White	12	110.0 <span style="color: green;">+</span>	92%	33% <span style="color: green;">+</span>	+1.4	+5%	+6%
	Black Caribbean	1	103.0	100%	0%	+4.8	+75%	-0%
	Black African	2	106.8	50%	0%	+3.5	-9%	-1%
	Indian	2	115.0	100%	100%	+4.9	+5%	+66%
	Pakistani	9	106.7	89%	11%	+1.8	+28%	+3%
	Other Asian	3	108.5	100%	0%	+1.7	+18%	-9%
	Chinese	1	108.0	100%	0%	+0.1	+9%	-11%
	Any Other	2	112.0	100%	50%	+3.0	+13%	+30%



KS2's latest academic year uses the Spring 2019 DfE census. Earlier years use that year's Spring census – [learn more](#) · [See recent Aspire updates](#)

# Subjects

## KS2 subject performance 2019

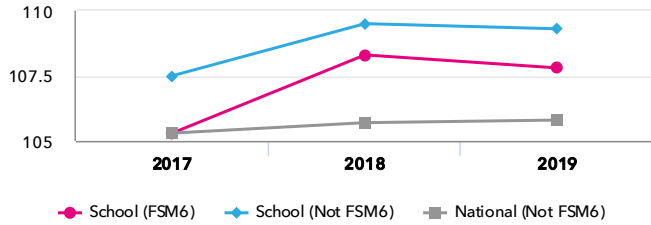
	Actual results			Pupil progress			Actual results over time		
	2017	2018	2019	2017	2018	2019			
Number of Pupils / % Matched	29	28	32	93%	96%	97%			
<b>Reading</b>									
% Expected standard+	69%	96% <span style="color: green;">+</span>	94% <span style="color: green;">+</span>	-13%	+12%	+8%			
% Higher standard	28%	43%	38%	-6%	+8%	+2%			
Scaled Score	104 <span style="color: grey;">↓</span>	109 <span style="color: green;">+</span> <span style="color: green;">↑</span>	109 <span style="color: green;">+</span>	-1.4 <span style="color: grey;">↓</span>	+2.4 <span style="color: green;">+</span> <span style="color: green;">↑</span>	+1.7			
<b>Writing</b>									
% Expected standard+	97% <span style="color: green;">+</span>	100% <span style="color: green;">+</span>	100% <span style="color: green;">+</span>	+12%	+13%	+9%			
% Higher standard	48% <span style="color: green;">+</span>	54% <span style="color: green;">+</span>	41% <span style="color: green;">+</span>	+25% <span style="color: green;">+</span>	+28% <span style="color: green;">+</span>	+13%			
Scaled Score	107 <span style="color: green;">+</span>	108 <span style="color: green;">+</span>	107 <span style="color: green;">+</span>	+4.1 <span style="color: green;">+</span>	+4.6 <span style="color: green;">+</span>	+2.3 <span style="color: green;">+</span> <span style="color: grey;">↓</span>			
<b>Maths</b>									
% Expected standard+	93% <span style="color: green;">+</span>	100% <span style="color: green;">+</span>	94% <span style="color: green;">+</span>	+13%	+17% <span style="color: green;">+</span>	+6%			
% Higher standard	34%	54% <span style="color: green;">+</span>	53% <span style="color: green;">+</span>	+0% <span style="color: grey;">↓</span>	+24% <span style="color: green;">+</span>	+16%			
Scaled Score	108 <span style="color: green;">+</span>	110 <span style="color: green;">+</span>	109 <span style="color: green;">+</span>	+2.4 <span style="color: green;">+</span>	+4.0 <span style="color: green;">+</span>	+2.5 <span style="color: green;">+</span>			
<b>Grammar, Punctuation &amp; Spelling</b>									
% Expected standard+	93%	100% <span style="color: green;">+</span>	100% <span style="color: green;">+</span>	+8%	+13%	+9%			
% Higher standard	52% <span style="color: green;">+</span>	79% <span style="color: green;">+</span> <span style="color: green;">↑</span>	75% <span style="color: green;">+</span>	+13%	+33% <span style="color: green;">+</span>	+27% <span style="color: green;">+</span>			
Scaled Score	110 <span style="color: green;">+</span>	114 <span style="color: green;">+</span> <span style="color: green;">↑</span>	114 <span style="color: green;">+</span>	+2.0	+5.7 <span style="color: green;">+</span> <span style="color: green;">↑</span>	+4.8 <span style="color: green;">+</span>			
<b>Science</b>									
% Expected standard+	97%	96%	100% <span style="color: green;">+</span>	-	-	-			

KS2's latest academic year uses the Spring 2019 DfE census. Earlier years use that year's Spring census – [learn more](#) · [See recent Aspire updates](#)

# Disadvantaged pupils

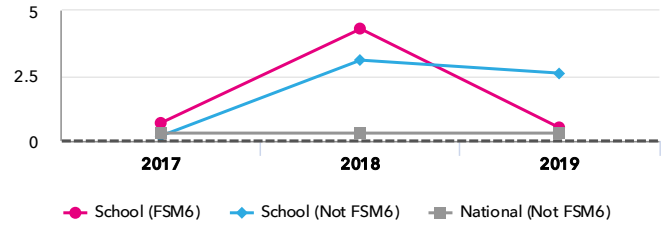
## KS2 attainment for disadvantaged pupils 2019

Average Scaled Score (Re, Ma)

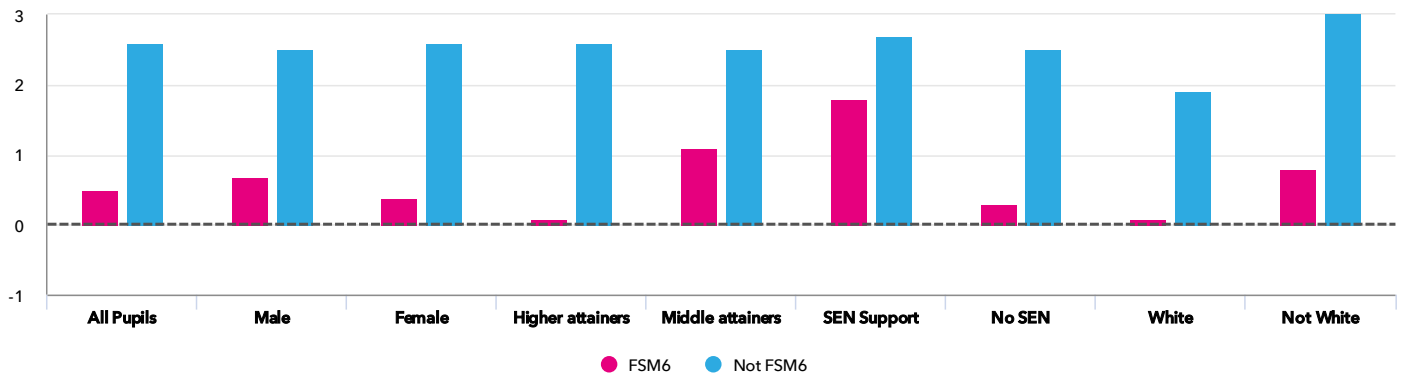


## KS2 progress for disadvantaged pupils 2019

Average Scaled Score (Re, Ma)



## Progress gap Average Scaled Score (Re, Ma)



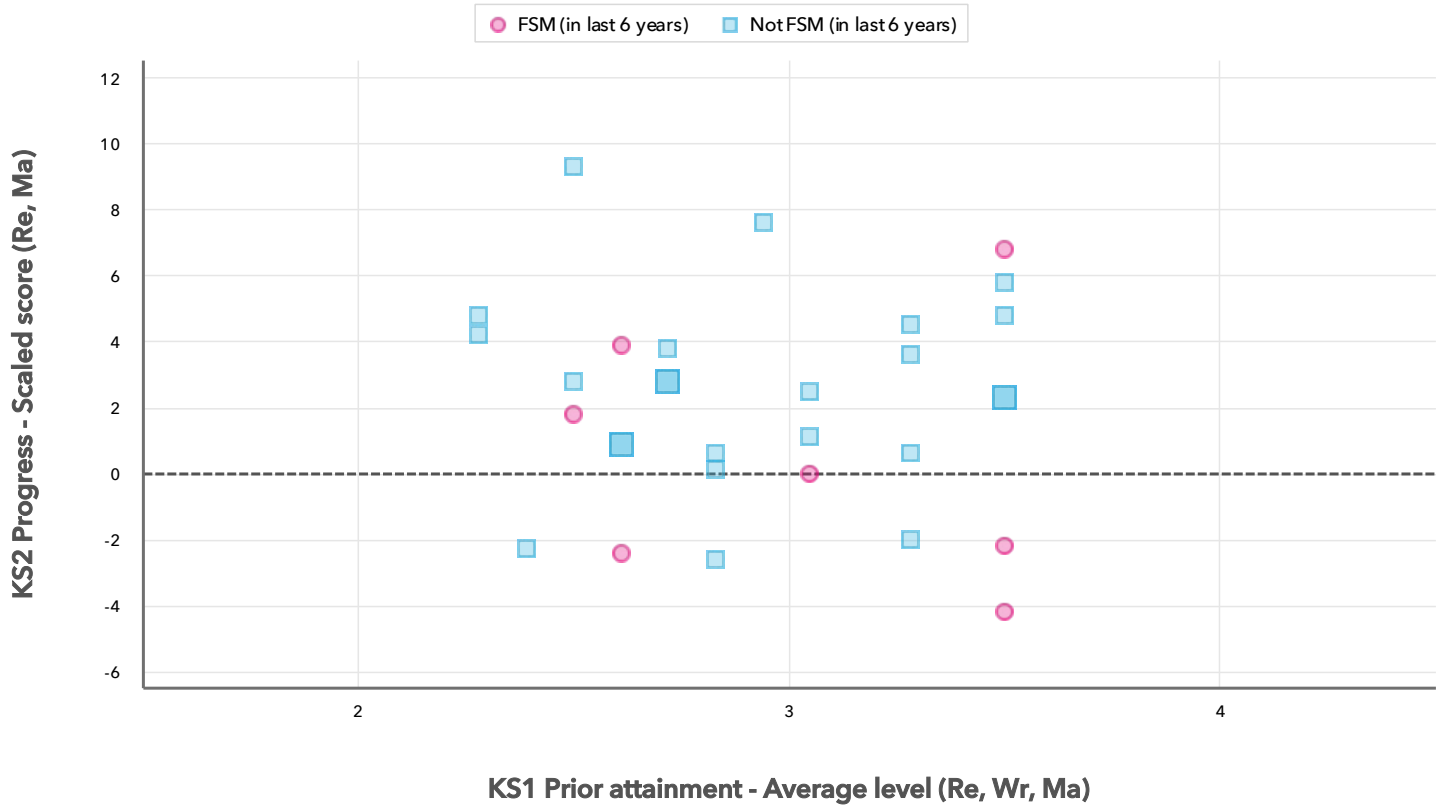
## Attainment & progress

Pupils	FSM6	Not FSM6	Attainment			Progress			
			Average Scaled Score (Re, Ma)			Average Scaled Score (Re, Ma)			
			FSM6	Not FSM6	Gap	FSM6	Not FSM6	Gap	
<b>Summary</b>	All Pupils	8	24	107.8	109.3 <span style="color: green;">+</span>	-1.5	0.5	2.6 <span style="color: green;">+</span>	-2.1
<b>Gender</b>	Male	3	15	104	108.6	-4.6	0.7	2.5	-1.8
	Female	5	9	110	110.4	-0.4	0.4	2.6	-2.2
<b>DFE Prior Attainment</b>	Higher attainers	4	13	111.5	112.5	-1	0.1	2.6	-2.5
	Middle attainers	3	11	104.5	105.5	-1	1.1	2.5	-1.4
<b>SEN Group</b>	SEN Support	2	6	103.3	104.2	-0.9	1.8	2.7	-0.9
	No SEN	6	18	109.3	111	-1.7	0.3	2.5	-2.2
<b>Ethnic Group</b>	White	3	9	112.3	109.2	3.1	0.1	1.9	-1.8
	Not White	5	15	105	109.3	-4.3	0.8	3	-2.2

KS2's latest academic year uses the Spring 2019 DfE census. Earlier years use that year's Spring census – [learn more](#) · [See recent Aspire updates](#)

# Scatterplot

KS2 Pupil scatterplot 2019 32 pupils highlighted by Pupil Premium



KS2's latest academic year uses the Spring 2019 DfE census. Earlier years use that year's Spring census – [learn more](#) · [See recent Aspire updates](#)

## Context

## Context · Year 6

		Pupils		Comparative profile 2018 / 2019		Absence during Key Stage 2		Persistent absence during Key Stage 2	
		School	School	National	School	National	School	National	
<b>Summary</b>	All Pupils	32	100%	100%	-	-	-	-	
<b>Gender</b>	Male	18	56%	51%	-	-	-	-	
	Female	14	44%	49%	-	-	-	-	
<b>DFE Prior Attainment</b>	Higher attainers	17	53%	32%	-	-	-	-	
	Middle attainers	14	44%	54%	-	-	-	-	
<b>Pupil Premium</b>	FSM (in last 6 years)	8	25%	29%	-	-	-	-	
	Not FSM (in last 6 years)	24	75%	71%	-	-	-	-	
<b>FSM</b>	FSM	4	13%	17%	-	-	-	-	
	Not FSM	28	88%	83%	-	-	-	-	
<b>FSM Ever</b>	FSM (ever)	9	28%	31%	-	-	-	-	
	Not FSM (ever)	23	72%	69%	-	-	-	-	
<b>Term of Birth</b>	Autumn Term	6	19%	33%	-	-	-	-	
	Spring Term	13	41%	33%	-	-	-	-	
	Summer Term	13	41%	34%	-	-	-	-	
<b>SEN Group</b>	SEN Support	8	25%	15%	-	-	-	-	
	No SEN	24	75%	82%	-	-	-	-	
<b>EAL</b>	First language not English	16	50%	21%	-	-	-	-	
	First language English	16	50%	79%	-	-	-	-	
<b>Mobility</b>	Joined in Y5 or Y6	2	6%	7%	-	-	-	-	
	Joined before Y5	30	94%	93%	-	-	-	-	
<b>Ethnicity</b>	White	12	38%	74%	-	-	-	-	
	Black Caribbean	1	3%	3%	-	-	-	-	
	Black African	2	6%	6%	-	-	-	-	
	Indian	2	6%	3%	-	-	-	-	
	Pakistani	9	28%	5%	-	-	-	-	
	Other Asian	3	9%	3%	-	-	-	-	
	Chinese	1	3%	0%	-	-	-	-	
	Any Other	2	6%	4%	-	-	-	-	

KS2's latest academic year uses the Spring 2019 DfE census. Earlier years use that year's Spring census – [learn more](#) · [See recent Aspire updates](#)