

2023 KS1 School Dashboard

for governors & school leaders

Produce custom dashboards
at fftaspire.org

Beecroft Primary School

LA Leeds DFE 3832407 Produced September 2023 Version 1

What it is

Seven easy-to-use reports that help governors and school leaders to evaluate school performance using the latest 2023 school performance indicators.

What it tells you

What are the strengths, areas for improvement and under-performing groups of pupils

How does attainment and pupil progress compare to the national average this academic year?

How are you performing in different subjects?

How might the context of your school affect performance?

Important for 2023

2023 data has been calculated using results uploaded by schools who participated in the 2023 FFT Results Service. **The data is for internal use only and is NOT intended to be used for external accountability.**

About the data shown

1 2 3

Actual results

Actual results for your school, using a range of measures such as averages and thresholds.



Gauges

These display headline indicators and whether actual results and pupils' progress are in line with, or significantly above or below, the national average.

ESTIMATED



1 2 3

Pupil progress

The value added progress that your pupils have made from one key stage to the next. FFT compares your actual results to the estimated results based on the progress of similar pupils nationally.



Statistical significance

Green plus signs and red minus signs highlight where either actual results or pupils' progress is significantly above or below the national average.



Trends

The dashboard analyses school performance over 3-5 years. Any significant year-on-year improvement is highlighted using an up arrow. Significant declines in performance are highlighted with a down arrow.



Strengths & weaknesses

These highlight key pupil groups and subjects where progress is above or below the national average.

Working in partnership with

Premier partner



National
Governors'
Association

Data sources

Generated from FFT Aspire which includes data sourced from schools using the 2023 FFT Results Service and data calculated by FFT.

2023 Value Added has only been calculated for pupils who we received EYFSP data as part of the 2021 FFT Results Service

Beecroft Primary School

2023

KS1

VA

Overview

KS1 Attainment 2023 · Actual results

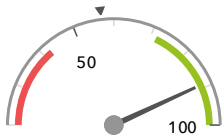
46 pupils

% Expected Standard + (Re, Wr, Ma)

% Higher Standard (Re, Wr, Ma)

89%+

24%+



Significantly above the national average (57%) ◀



Significantly above the national average (6%) ◀

KS1 Progress 2023 · Value Added

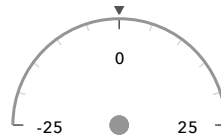
matched pupils

% Expected Standard + (Re, Wr, Ma)

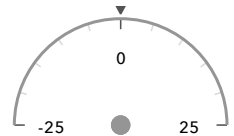
% Higher Standard (Re, Wr, Ma)

—

—



In line with the national average (0%) ◀



In line with the national average (0%) ◀

KS1 higher and lower performing pupil groups 2023

Minimum group size: 5

	Higher performing	Lower performing
Overall achievement pupil progress		
KS1 reading achievement pupil progress		
KS1 writing achievement pupil progress		
KS1 mathematics achievement pupil progress		

Census information

KS1's latest academic year uses the context data provided in the school's MIS

2023 Value Added has only been calculated for pupils who we received EYFSP data as part of the 2021 FFT Results Service

Beecroft Primary School

2023

KS1

VA

Attainment & progress

KS1 Attainment 2023

46 pupils

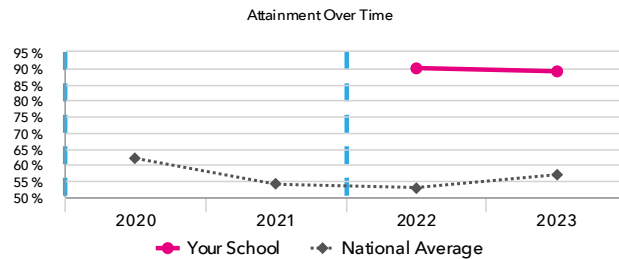
% Expected Standard + (Re, Wr, Ma)

89%+

FFT Rank

100 BETTER 1

Significantly above the national average (57%)



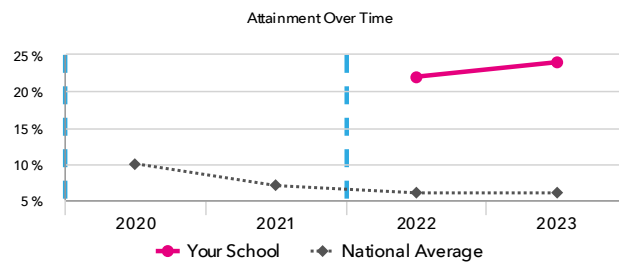
% Higher Standard (Re, Wr, Ma)

24%+

FFT Rank

100 BETTER 1

Significantly above the national average (6%)



KS1 Progress 2023

% Expected Standard + (Re, Wr, Ma)

—

FFT Rank

100 BETTER 1

In line with the national average (0%)

% Higher Standard (Re, Wr, Ma)

—

FFT Rank

100 BETTER 1

In line with the national average (0%)

KS1 performance summary

	Actual results			Pupil progress		
	2021	2022	2023	2021	2022	2023
Number of Pupils / % Matched	-	41	46	-	-	-
% Expected Standard + (Re, Wr, Ma)	-	90%+	89%+	-	-	-
% Higher Standard (Re, Wr, Ma)	-	22%+	24%+	-	-	-
% Expected Standard + Reading	-	90%+	91%+	-	-	-
% Higher Standard Reading	-	34%+	35%+	-	-	-
% Expected Standard + Writing	-	90%+	91%+	-	-	-
% Higher Standard Writing	-	22%+	28%+	-	-	-
% Expected Standard + Maths	-	90%+	91%+	-	-	-
% Higher Standard Maths	-	29%+	35%+	-	-	-

Census information

KS1's latest academic year uses the context data provided in the school's MIS

2023 Value Added has only been calculated for pupils who we received EYFSP data as part of the 2021 FFT Results Service

Beecroft Primary School

2023

KS1

VA

Pupil groups

KS1 Pupil groups performance 2023

		Pupils	Actual results		Pupil progress	
			% Expected Standard + (Re, Wr, Ma)	% Higher Standard (Re, Wr, Ma)	% Expected Standard + (Re, Wr, Ma)	% Higher Standard (Re, Wr, Ma)
Summary	All Pupils	46	89% +	24% +	-	-
Gender	Male	27	85% +	26% +	-	-
	Female	19	95% +	21% +	-	-
Pupil Premium	FSM (in last 6 years)	6	83%	17%	-	-
	Not FSM (in last 6 years)	40	90% +	25% +	-	-
FSM	FSM	6	83%	17%	-	-
	Not FSM	40	90% +	25% +	-	-
Term of Birth	Summer Term	14	86% +	0%	-	-
	Spring Term	10	100% +	30% +	-	-
	Autumn Term	22	86% +	36% +	-	-
SEN Group	SEN Support	6	67% +	0%	-	-
	No SEN	40	93% +	28% +	-	-
EAL	First language not English	15	87% +	7%	-	-
	First language English	30	90% +	30% +	-	-
Ethnicity	White	22	91% +	32% +	-	-
	Black Caribbean	5	80%	20%	-	-
	Indian	2	100%	50%	-	-
	Pakistani	7	86%	14%	-	-
	Other Asian	7	86%	14%	-	-
	Any Other	3	100%	0%	-	-

High-to-low chart

Pupil progress in visually from high to low



Census information

KS1's latest academic year uses the context data provided in the school's MIS

2023 Value Added has only been calculated for pupils who we received EYFSP data as part of the 2021 FFT Results Service

Beecroft Primary School

2023

KS1

VA

Subjects

KS1 subject performance 2023

	Actual results			Pupil progress			Actual results over time												
	2021	2022	2023	2021	2022	2023													
Number of Pupils / % Matched	-	41	46	-	-	-													
Reading																			
% Expected Standard +	-	90% ⬆	91% ⬆	-	-	-	<div><div>% Expected Standard + Reading</div><table><thead><tr><th>Year</th><th>Your School</th><th>National Average</th></tr></thead><tbody><tr><td>2021</td><td>90%</td><td>~68%</td></tr><tr><td>2022</td><td>90%</td><td>~68%</td></tr><tr><td>2023</td><td>91%</td><td>~70%</td></tr></tbody></table></div>	Year	Your School	National Average	2021	90%	~68%	2022	90%	~68%	2023	91%	~70%
Year	Your School	National Average																	
2021	90%	~68%																	
2022	90%	~68%																	
2023	91%	~70%																	
% Higher Standard	-	34% ⬆	35% ⬆	-	-	-													
Writing																			
% Expected Standard +	-	90% ⬆	91% ⬆	-	-	-	<div><div>% Expected Standard + Writing</div><table><thead><tr><th>Year</th><th>Your School</th><th>National Average</th></tr></thead><tbody><tr><td>2021</td><td>90%</td><td>~60%</td></tr><tr><td>2022</td><td>90%</td><td>~60%</td></tr><tr><td>2023</td><td>91%</td><td>~62%</td></tr></tbody></table></div>	Year	Your School	National Average	2021	90%	~60%	2022	90%	~60%	2023	91%	~62%
Year	Your School	National Average																	
2021	90%	~60%																	
2022	90%	~60%																	
2023	91%	~62%																	
% Higher Standard	-	22% ⬆	28% ⬆	-	-	-													
Maths																			
% Expected Standard +	-	90% ⬆	91% ⬆	-	-	-	<div><div>% Expected Standard + Maths</div><table><thead><tr><th>Year</th><th>Your School</th><th>National Average</th></tr></thead><tbody><tr><td>2021</td><td>90%</td><td>~68%</td></tr><tr><td>2022</td><td>90%</td><td>~68%</td></tr><tr><td>2023</td><td>91%</td><td>~72%</td></tr></tbody></table></div>	Year	Your School	National Average	2021	90%	~68%	2022	90%	~68%	2023	91%	~72%
Year	Your School	National Average																	
2021	90%	~68%																	
2022	90%	~68%																	
2023	91%	~72%																	
% Higher Standard	-	29% ⬆	35% ⬆	-	-	-													
Science																			
% Expected Standard +	-	90%	89%	-	-	-	<div><div>% Expected Standard + Science</div><table><thead><tr><th>Year</th><th>Your School</th><th>National Average</th></tr></thead><tbody><tr><td>2021</td><td>90%</td><td>~78%</td></tr><tr><td>2022</td><td>90%</td><td>~78%</td></tr><tr><td>2023</td><td>89%</td><td>~80%</td></tr></tbody></table></div>	Year	Your School	National Average	2021	90%	~78%	2022	90%	~78%	2023	89%	~80%
Year	Your School	National Average																	
2021	90%	~78%																	
2022	90%	~78%																	
2023	89%	~80%																	

Census information

KS1's latest academic year uses the context data provided in the school's MIS

2023 Value Added has only been calculated for pupils who we received EYFSP data as part of the 2021 FFT Results Service

Beecroft Primary School

2023

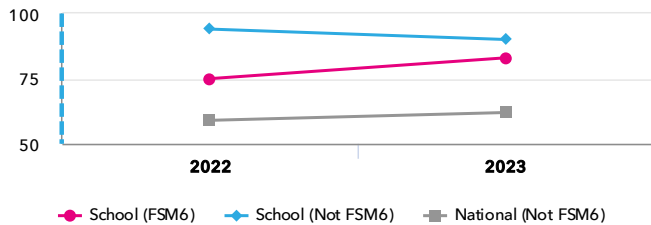
KS1

VA

Disadvantaged pupils

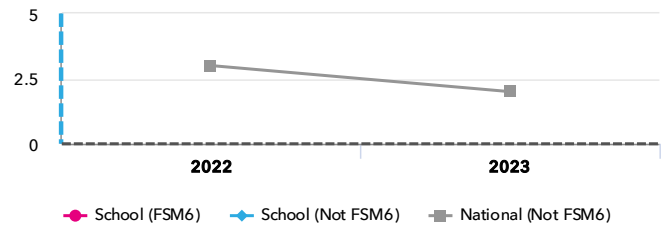
KS1 attainment for disadvantaged pupils 2023

% Expected Standard + (Re, Wr, Ma)



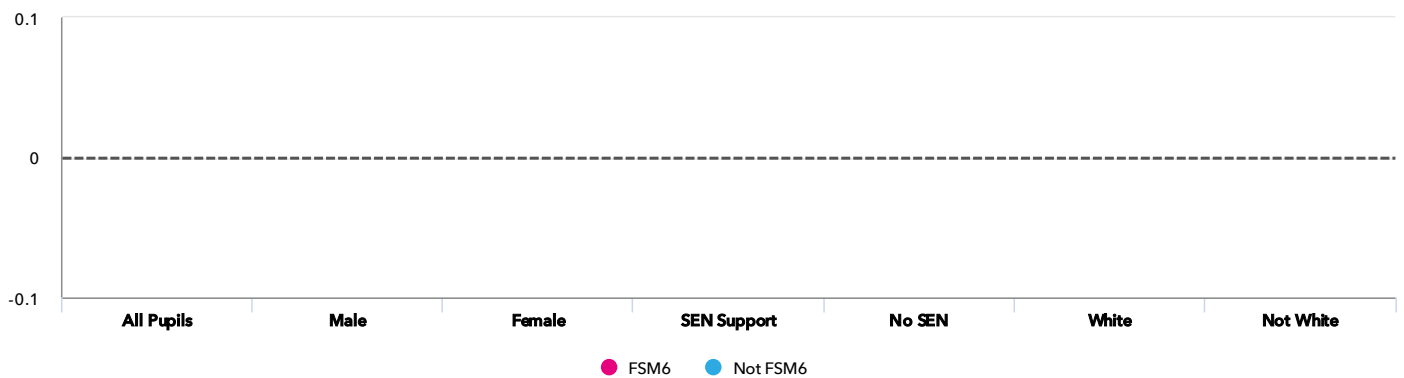
KS1 progress for disadvantaged pupils 2023

% Expected Standard + (Re, Wr, Ma)




Progress gap

% Expected Standard + (Re, Wr, Ma)



Attainment & progress

Pupils				Attainment			Progress		
				% Expected Standard + (Re, Wr, Ma)			% Expected Standard + (Re, Wr, Ma)		
		FSM6	Not FSM6	FSM6	Not FSM6	Gap	FSM6	Not FSM6	Gap
Summary	All Pupils	6	40	83%	90% 	-7%	-	-	-
Gender	Male	4	23	100%	83%	17%	-	-	-
	Female	2	17	50%	100%	-50%	-	-	-
SEN Group	SEN Support	1	5	0%	80%	-80%	-	-	-
	No SEN	5	35	100%	91%	9%	-	-	-
Ethnic Group	White	2	20	50%	95%	-45%	-	-	-
	Not White	4	20	100%	85%	15%	-	-	-

Census information

KS1's latest academic year uses the context data provided in the school's MIS

2023 Value Added has only been calculated for pupils who we received EYFSP data as part of the 2021 FFT Results Service

Beecroft Primary School

2023 KS1 VA

Scatterplot

KS1 Pupil scatterplot 2023 46 pupils highlighted by Pupil Premium ▼



Census information

KS1's latest academic year uses the context data provided in the school's MIS

Context

Context · Year 2

		Pupils	Comparative profile 2022 / 2023		Absence during Key Stage 1		Persistent absence during Key Stage 1	
		School	School	National	School	National	School	National
Summary	All Pupils	46	100%	100%	-	-	-	-
Gender	Male	27	59%	51%	-	-	-	-
	Female	19	41%	49%	-	-	-	-
Pupil Premium	FSM (in last 6 years)	6	13%	27%	-	-	-	-
	Not FSM (in last 6 years)	40	87%	72%	-	-	-	-
FSM	FSM	6	13%	26%	-	-	-	-
	Not FSM	40	87%	73%	-	-	-	-
Term of Birth	Summer Term	14	30%	34%	-	-	-	-
	Spring Term	10	22%	32%	-	-	-	-
	Autumn Term	22	48%	34%	-	-	-	-
SEN Group	SEN Support	6	13%	14%	-	-	-	-
	No SEN	40	87%	83%	-	-	-	-
EAL	First language not English	15	33%	24%	-	-	-	-
	First language English	30	65%	74%	-	-	-	-
Ethnicity	White	22	48%	67%	-	-	-	-
	Black Caribbean	5	11%	2%	-	-	-	-
	Indian	2	4%	5%	-	-	-	-
	Pakistani	7	15%	6%	-	-	-	-
	Other Asian	7	15%	4%	-	-	-	-
	Any Other	3	7%	6%	-	-	-	-

Census information

KS1's latest academic year uses the context data provided in the school's MIS