

2018 KS2 School Dashboard

for governors & school leaders

Produce custom dashboards at www.fftaspire.org

Beecroft Primary School

LA Leeds DFE 3832407 Produced September 2018 Version 1

What it is

Seven easy-to-use reports which help governors and school leaders to evaluate school performance using the latest 2017 DfE school performance indicators.

What it tells you

- What are the strengths and areas for improvement in your school?
- How does attainment and pupil progress compare to the national average?
- How are you performing in different subjects?
- Do you have any under-performing groups of pupils?
- How might the context of your school affect performance?
- How does pupil attendance compare to the national average?

About the data shown

1 2 3

Actual results

Actual results for your school, using a range of measures such as averages and thresholds.



Gauges

These display headline indicators and whether actual results and pupils' progress are in line with, or significantly above or below, the national average.

ESTIMATED



1 2 3

Pupil progress

The value added progress that your pupils have made from one key stage to the next. FFT compares your actual results to the estimated results based on the progress of similar pupils nationally.



Statistical significance

Green plus signs and red minus signs highlight where either actual results or pupils' progress is significantly above or below the national average.



Trends

The dashboard analyses school performance over 3-5 years. Any significant year-on-year improvement is highlighted using an up arrow. Significant declines in performance are highlighted with a down arrow.



Strengths & weaknesses

These highlight key pupil groups and subjects where progress is above or below the national average.

Working in partnership with



Data sources

Generated from FFT Aspire which includes data sourced from the DfE (National Pupil Database) and data calculated by FFT. FFT is accredited as a DfE supplier to receive early access to ASP data. Headline performance indicators will be consistent with the DfE School Performance Tables and ASP.

Overview

KS2 Attainment 2018 · Actual results

28 pupils

KS2 Progress 2018 · Value Added

27 matched pupils

Average Scaled Score (Re, Ma)

% Expected standard+ (Re, Wr, Ma)

Average Scaled Score (Re, Ma)

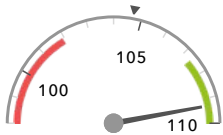
% Expected standard+ (Re, Wr, Ma)

109.3 + ↑

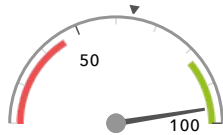
96% +

+3.2 + ↑

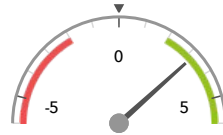
+21% +



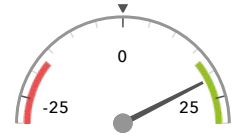
Significantly above the national average (104.7) ◀



Significantly above the national average (64%) ◀



Significantly above the national average (0) ◀



Significantly above the national average (0%) ◀

KS2 higher and lower performing pupil groups 2018

	Higher performing	Lower performing
Overall achievement pupil progress	Lower attainers (5) + Summer Term (5) Pakistani (7) +	
KS2 reading achievement pupil progress	Lower attainers (5) Female (12) ↑ Spring Term (12)	
KS2 writing achievement pupil progress	Lower attainers (5) + Summer Term (5) Pakistani (7) +	
KS2 mathematics achievement pupil progress	Lower attainers (5) + Summer Term (5) + Pakistani (7) +	
KS2 grammar, punctuation & spelling achievement pupil progress	Lower attainers (5) + ↑ Summer Term (5) + ↑ First language not English (18) + ↑	

Attainment & progress

KS2 Attainment 2018

28 pupils

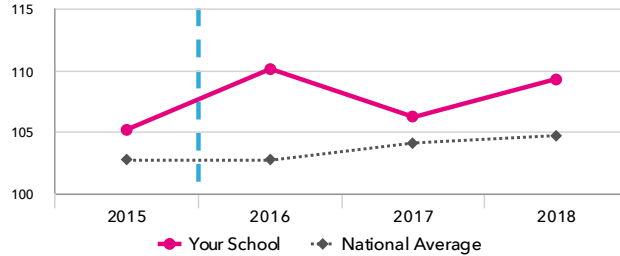
Average Scaled Score (Re, Ma)

109.3 + ↑

FFT Rank



Significantly above the national average (104.7)



KS2 Progress 2018

27 matched pupils

Average Scaled Score (Re, Ma)

+3.2 + ↑

FFT Rank



Significantly above the national average (0)

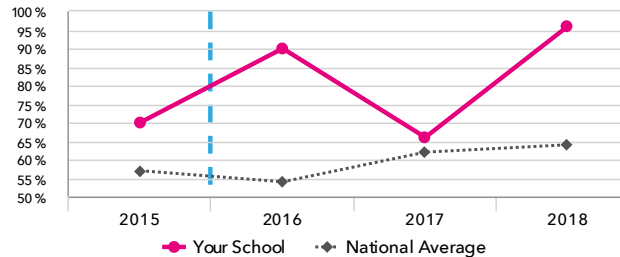
% Expected standard+ (Re, Wr, Ma)

+21% +

FFT Rank



Significantly above the national average (0%)



% Expected standard+ (Re, Wr, Ma)

96% +

FFT Rank



Significantly above the national average (64%)

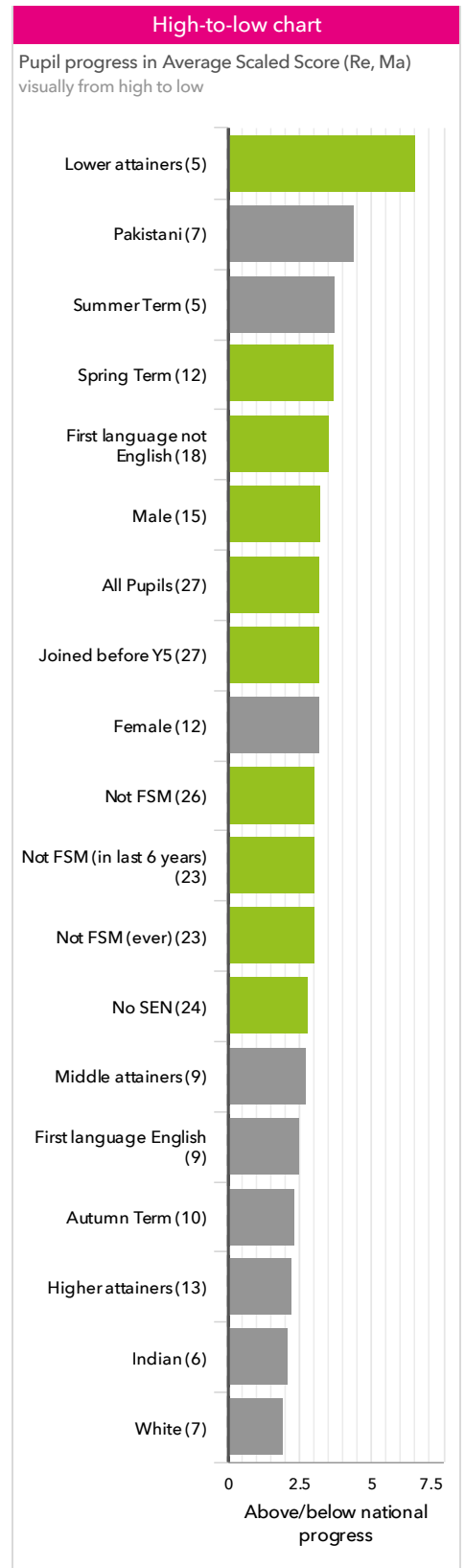
KS2 performance summary

	Actual results			Pupil progress		
	2016	2017	2018	2016	2017	2018
Number of Pupils / % Matched	30	29	28	97%	93%	96%
% Expected standard+ (Re, Wr, Ma)	90% +	66%	96% +	+22% +	-5%	+21% +
% Higher standard (Re, Wr, Ma)	33% +	24% +	36% +	+22% +	+9%	+23% +
Average Scaled Score (Re, GPS, Ma)	109.8 + ↑	107.5 +	110.5 + ↑	+4.3 +	+1.4 ↓	+4.1 + ↑
Average Scaled Score (Re, Ma)	110.1 + ↑	106.2 ↓	109.3 + ↑	+4.9 + ↑	+0.5 ↓	+3.2 + ↑
% Expected standard+ Reading	93% +	69%	96% +	+13%	-13%	+12%
% Higher standard Reading	47% +	28%	43%	+17%	-6%	+8%
Scaled Score Reading	110.3 + ↑	104.4 ↓	108.9 + ↑	+5.0 + ↑	-1.4 ↓	+2.4 + ↑
% Expected standard+ Writing	100% +	97% +	100% +	+14% +	+12%	+13%
% Higher standard Writing	43% +	48% +	54% +	+17% +	+25% +	+28% +
Scaled Score Writing	107.3 +	107.4 +	108.4 +	+3.7 +	+4.1 +	+4.6 +
% Expected standard+ Maths	97% +	93% +	100% +	+16% +	+13%	+17% +
% Higher standard Maths	53% +	34%	54% +	+27% +	+0% ↓	+24% +
Scaled Score Maths	109.9 + ↑	107.9 +	109.8 +	+4.7 +	+2.4 +	+4.0 +
% Expected standard+ Grammar, Punctuation & Spelling	100% +	93%	100% +	+14% +	+8%	+14% +
% Higher standard Grammar, Punctuation & Spelling	53% +	52% +	79% + ↑	+16%	+13%	+33% +
Scaled Score Grammar, Punctuation & Spelling	109.2 +	109.5 +	113.7 + ↑	+2.7 +	+2.0	+5.7 + ↑
% Expected standard+ Science	100% +	97%	96%	-	-	-
Average Point Score (Re, Wr, Ma)	-	-	-	-	-	-
% Level 4+ (Re, Wr, Ma)	-	-	-	-	-	-
% Level 4B+ (Re, Wr, Ma)	-	-	-	-	-	-
% Level 5+ (Re, Wr, Ma)	-	-	-	-	-	-

Pupil groups

KS2 Pupil groups performance 2018

		Pupils	Actual results			Pupil progress		
			Average Scaled Score (Re, Ma)	% Expected standard + (Re, Wr, Ma)	% Higher standard (Re, Wr, Ma)	Average Scaled Score (Re, Ma)	% Expected standard + (Re, Wr, Ma)	% Higher standard (Re, Wr, Ma)
Summary	All Pupils >	28	109.3 \uparrow	96% \oplus	36% \oplus	+3.2 \uparrow	+21% \oplus	+23% \oplus
Gender	Male >	15	109.3 \oplus	93% \oplus	27% \oplus	+3.2 \oplus	+18%	+15%
	Female >	13	109.4 \oplus	100% \oplus	46% \oplus	+3.2 \uparrow	+25%	+33% \oplus
Prior Attainment	Higher attainers >	13	112.6	100%	69% \oplus	+2.3	+5%	+42% \oplus
	Middle attainers >	9	108.0 \uparrow	100%	11%	+2.7 \uparrow	+24%	+8%
	Lower attainers >	5	103.8 \uparrow	80% \oplus	0%	+6.5 \oplus	+57% \oplus	-0%
Pupil Premium	FSM (in last 6 years) >	5	108.3	100%	20%	+4.2	+34%	+14%
	Not FSM (in last 6 years) >	23	109.6 \oplus	96% \oplus	39% \oplus	+3.0 \oplus	+19% \oplus	+24% \oplus
FSM	FSM >	1	102.5	100%	0%	+7.6	+81%	-0%
	Not FSM >	27	109.6 \oplus	96% \oplus	37% \oplus	+3.0 \oplus	+19% \oplus	+24% \oplus
FSM Ever	FSM (ever) >	5	108.3	100%	20%	+4.2	+34%	+14%
	Not FSM (ever) >	23	109.6 \oplus	96% \oplus	39% \oplus	+3.0 \oplus	+19% \oplus	+24% \oplus
Term of Birth	Autumn Term >	10	111.2 \oplus	90%	70% \oplus	+2.3	+4%	+47% \oplus
	Spring Term >	13	108.7	100% \oplus	15%	+3.7 \oplus	+30% \oplus	+5%
	Summer Term >	5	107.2	100%	20%	+3.8	+35%	+16%
SEN Group	SEN Support >	3	107.3	100%	33%	+6.6	+60%	+20%
	No SEN >	25	109.6 \oplus	96% \oplus	36% \oplus	+2.8 \oplus \uparrow	+16%	+23% \oplus
EAL	First language not English >	19	109.0 \oplus	95% \oplus	32% \oplus	+3.6 \oplus \uparrow	+24% \oplus	+19% \oplus
	First language English >	9	110.0 \oplus	100%	44% \oplus	+2.5	+17%	+30% \oplus
Mobility	Joined before Y5 >	28	109.3 \oplus	96% \oplus	36% \oplus	+3.2 \oplus \uparrow	+21% \oplus	+23% \oplus
Ethnicity	White >	7	109.4	100%	43% \oplus	+1.9 \uparrow	+16%	+30%
	Black African >	1	114.0	100%	100%	+3.5	+3%	+74%
	Indian >	6	111.1	100%	50%	+2.1	+10%	+30%
	Pakistani >	7	107.9	86%	29%	+4.4	+31%	+15%
	Other Asian >	4	108.9	100%	25%	+4.2	+30%	+13%
	Any Other >	3	108.0	100%	0%	+4.9	+34%	-1%



Subjects

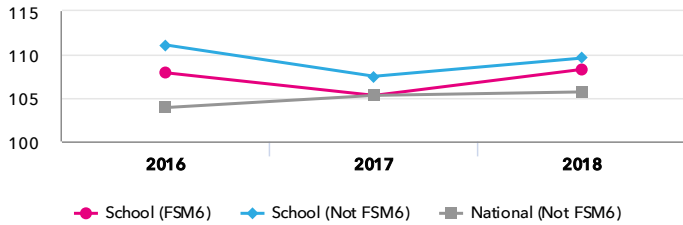
KS2 subject performance 2018

	Actual results			Pupil progress			Actual results over time
	2016	2017	2018	2016	2017	2018	
Number of Pupils / % Matched	30	29	28	97%	93%	96%	
Reading							
% Expected standard+	93% +	69% +	96% +	+13%	-13%	+12%	
% Higher standard	47% +	28%	43%	+17%	-6%	+8%	
Scaled Score	110 + ↑	104 ↓	109 + ↑	+5.0 + ↑	-1.4 ↓	+2.4 + ↑	
Level 4+	-	-	-	-	-	-	
Level 4B+	-	-	-	-	-	-	
Level 5+	-	-	-	-	-	-	
Average Point Score	-	-	-	-	-	-	
Writing							
% Expected standard+	100% +	97% +	100% +	+14% +	+12%	+13%	
% Higher standard	43% +	48% +	54% +	+17% +	+25% +	+28% +	
Scaled Score	107 +	107 +	108 +	+3.7 +	+4.1 +	+4.6 +	
Level 4+	-	-	-	-	-	-	
Level 5+	-	-	-	-	-	-	
Average Point Score	-	-	-	-	-	-	
Maths							
% Expected standard+	97% +	93% +	100% +	+16% +	+13%	+17% +	
% Higher standard	53% +	34%	54% +	+27% +	+0% ↓	+24% +	
Scaled Score	110 + ↑	108 +	110 +	+4.7 +	+2.4 +	+4.0 +	
Level 4+	-	-	-	-	-	-	
Level 4B+	-	-	-	-	-	-	
Level 5+	-	-	-	-	-	-	
Average Point Score	-	-	-	-	-	-	
Grammar, Punctuation & Spelling							
% Expected standard+	100% +	93%	100% +	+14% +	+8%	+14% +	
% Higher standard	53% +	52% +	79% + ↑	+16%	+13%	+33% +	
Scaled Score	109 +	110 +	114 + ↑	+2.7 +	+2.0	+5.7 + ↑	
Science							
% Expected standard+	100% +	97%	96%	-	-	-	
Level 4+	-	-	-	-	-	-	
Level 5+	-	-	-	-	-	-	
Average Point Score	-	-	-	-	-	-	

Disadvantaged pupils

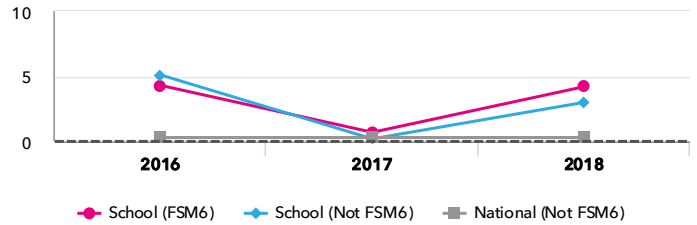
KS2 attainment for disadvantaged pupils 2018

Average Scaled Score (Re, Ma)



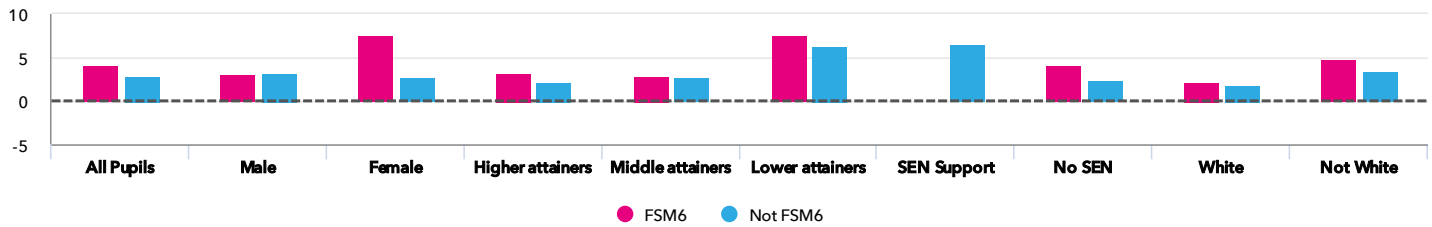
KS2 progress for disadvantaged pupils 2018

Average Scaled Score (Re, Ma)



Progress gap

Average Scaled Score (Re, Ma)

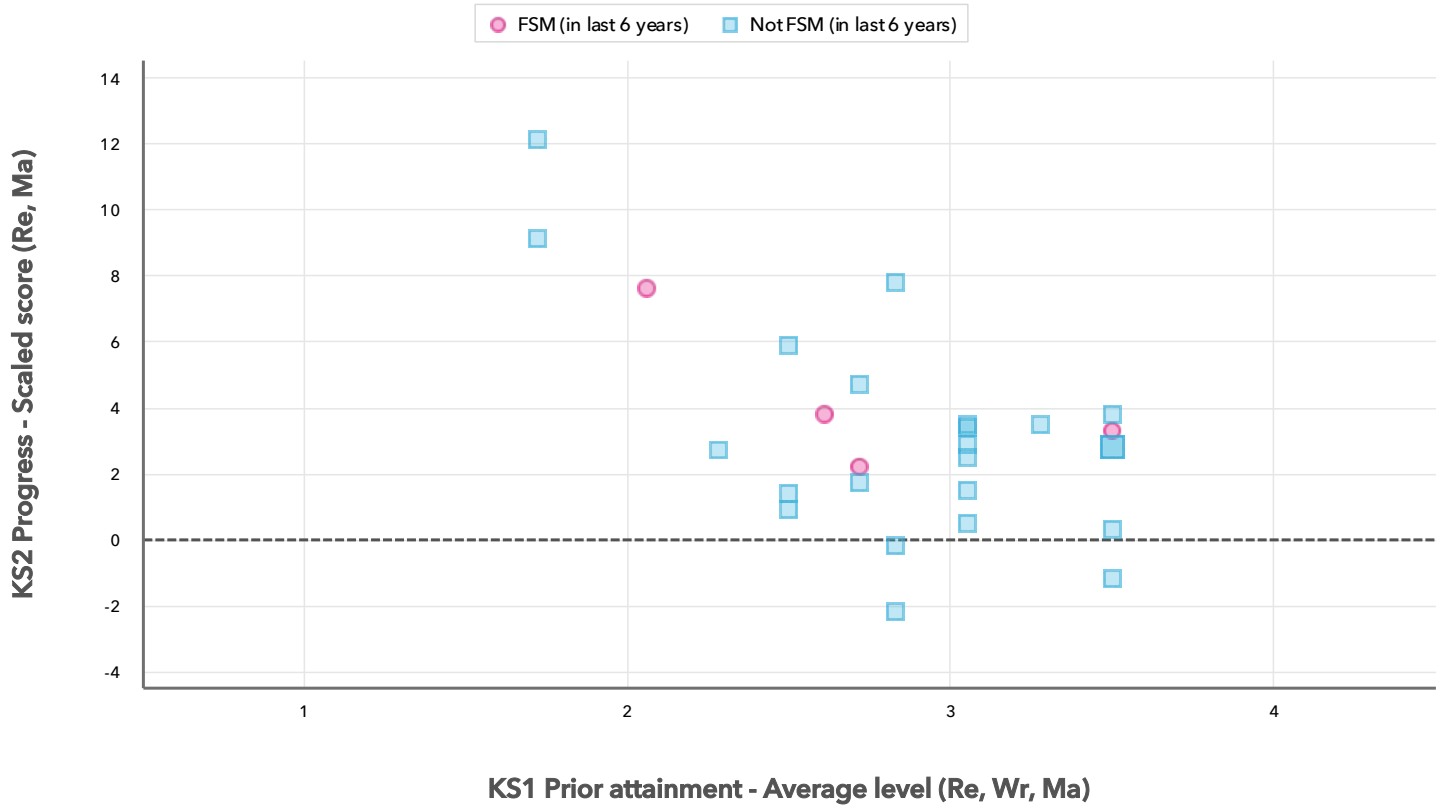


Attainment & progress

Pupils			Attainment			Progress			
			Average Scaled Score (Re, Ma)			Average Scaled Score (Re, Ma)			
	FSM6	Not FSM6	FSM6	Not FSM6	Gap	FSM6	Not FSM6	Gap	
Summary	All Pupils	5	23	108.3	109.6 +	-1.3	4.2	3 +	1.2
Gender	Male	3	12	110.7	109	1.7	3.1	3.3	-0.2
	Female	2	11	104.8	110.2	-5.4	7.6	2.8	4.8
Prior Attainment	Higher attainers	1	12	115.5	112.3	3.2	3.3	2.2	1.1
	Middle attainers	2	7	108.3	107.9	0.4	3	2.7	0.3
	Lower attainers	1	4	102.5	104.1	-1.6	7.6	6.3	1.3
SEN Group	SEN Support	-	3	-	107.3	-	-	6.6	-
	No SEN	5	20	108.3	109.9	-1.6	4.2	2.5	1.7
Ethnic Group	White	1	6	108	109.7	-1.7	2.2	1.9	0.3
	Not White	4	17	108.4	109.5	-1.1	4.9	3.4	1.5

Scatterplot

KS2 Pupil scatterplot 2018 28 pupils highlighted by Pupil Premium



Context

Context · Year 6 · 2017 / 2018

		Pupils	Proportion	
			School	National
Summary	All Pupils	28	100%	100%
Gender	Male	15	54%	51%
	Female	13	46%	49%
Prior Attainment	Higher attainers	13	46%	31%
	Middle attainers	9	32%	35%
	Lower attainers	5	18%	29%
Pupil Premium	FSM (in last 6 years)	5	18%	30%
	Not FSM (in last 6 years)	23	82%	69%
FSM	FSM	1	4%	15%
	Not FSM	27	96%	85%
FSM Ever	FSM (ever)	5	18%	31%
	Not FSM (ever)	23	82%	69%
Term of Birth	Autumn Term	10	36%	33%
	Spring Term	13	46%	32%
	Summer Term	5	18%	35%
SEN Group	SEN Support	3	11%	15%
	No SEN	25	89%	82%
EAL	First language not English	19	68%	20%
	First language English	9	32%	80%
Mobility	Joined before Y5	28	100%	93%
Ethnicity	White	7	25%	74%
	Black African	1	4%	6%
	Indian	6	21%	3%
	Pakistani	7	25%	4%
	Other Asian	4	14%	3%
	Any Other	3	11%	4%

Absence · Year 6 · 2017 / 2018

		Pupils	Absence		Persistent absentees	
			School	National	School	National
Summary	All Pupils	28	1%	4%	0%	5%
Gender	Male	15	2%	4%	0%	6%
	Female	13	1%	4%	0%	5%
Prior Attainment	Higher attainers	13	1%	3%	0%	2%
	Middle attainers	9	1%	4%	0%	4%
	Lower attainers	5	2%	5%	0%	10%
Pupil Premium	FSM (in last 6 years)	5	2%	5%	0%	12%
	Not FSM (in last 6 years)	23	1%	3%	0%	3%
FSM	FSM	1	2%	6%	0%	16%
	Not FSM	27	1%	4%	0%	4%
FSM Ever	FSM (ever)	5	2%	5%	0%	11%
	Not FSM (ever)	23	1%	3%	0%	3%
Term of Birth	Autumn Term	10	1%	4%	0%	6%
	Spring Term	13	2%	4%	0%	6%
	Summer Term	5	2%	4%	0%	5%
SEN Group	SEN Support	3	2%	5%	0%	10%
	No SEN	25	1%	4%	0%	4%
EAL	First language not English	19	1%	4%	0%	5%
	First language English	9	1%	4%	0%	6%
Mobility	Joined before Y5	28	1%	4%	0%	5%
Ethnicity	White	7	1%	4%	0%	6%
	Black African	1	1%	3%	0%	3%
	Indian	6	1%	3%	0%	3%
	Pakistani	7	2%	5%	0%	6%
	Other Asian	4	1%	4%	0%	4%
	Any Other	3	1%	4%	0%	6%